



**GIANT**<sup>®</sup>  
BY TOBROCO



COMPACT DESIGN  
BIG IN PERFORMANCE

# G2200



**G2200**  
**G2200 X-TRA**  
**G2200 HD**  
**G2200 HD X-TRA**  
**G2200 HD+**  
**G2200 HD+ X-TRA**



**SIX NEW COMPACT  
POWERHOUSES**

[WWW.TOBROCO-GIANT.COM](http://WWW.TOBROCO-GIANT.COM)

## TECHNICAL DATA

| TYPE                        | G2200                      | G2200 X-TRA | G2200 HD                   | G2200 HD X-TRA | G2200 HD+                           | G2200 HD+ X-TRA |
|-----------------------------|----------------------------|-------------|----------------------------|----------------|-------------------------------------|-----------------|
| Service weight <sup>1</sup> | 2.100 kg                   | 2.200 kg    | 2.100 kg                   | 2.200 kg       | 2.100 kg                            | 2.200 kg        |
| Lifting capacity            | 1.650 kg                   | 2.200 kg    | 1.650 kg                   | 2.200 kg       | 1.650 kg                            | 2.200 kg        |
| Tipping load <sup>2</sup>   | 1.450 kg                   | 2.054 kg    | 1.450 kg                   | 2.054 kg       | 1.450 kg                            | 2.054 kg        |
| <b>DIMENSIONS AND SPEED</b> |                            |             |                            |                |                                     |                 |
| Lifting height <sup>2</sup> | 2.825 mm                   | 2.450 mm    | 2.825 mm                   | 2.450 mm       | 2.825 mm                            | 2.450 mm        |
| Length without bucket       | 2.975 mm                   | 3.054 mm    | 2.975 mm                   | 3.054 mm       | 2.975 mm                            | 3.054 mm        |
| Machine height <sup>3</sup> | 2.300 mm                   | 2.300 mm    | 2.300 mm                   | 2.300 mm       | 2.300 mm                            | 2.300 mm        |
| Width on standard tyres     | 1.080 mm                   | 1.080 mm    | 1.080 mm                   | 1.080 mm       | 1.080 mm                            | 1.080 mm        |
| Standard tyres              | 10.0/75x15.3 AS            |             | 10.0/75x15.3 AS            |                | 10.0/75x15.3 AS                     |                 |
| Travel speed                | 0-12 km/h                  |             | 0-10 km/h 0-20 km/h        |                | 0-10 km/h 0-20 km/h                 |                 |
| <b>ENGINE</b>               |                            |             |                            |                |                                     |                 |
|                             | Kubota D1105 (STAGE V)     |             | Kubota D1105 (STAGE V)     |                | Kubota D1105 (STAGE V)              |                 |
| Cylinders                   | 3                          |             | 3                          |                | 3                                   |                 |
| Engine power                | 26 hp / 18,5 kW            |             | 26 hp / 18,5 kW            |                | 26 hp / 18,5 kW                     |                 |
| Type                        | Diesel                     |             | Diesel                     |                | Diesel                              |                 |
| Fuel tank capacity          | 37 l                       |             | 37 l                       |                | 37 l                                |                 |
| Oil capacity                | 56 l                       |             | 56 l                       |                | 56 l                                |                 |
| <b>POWERTRAIN</b>           |                            |             |                            |                |                                     |                 |
| Type                        | Hydrostatic 4 wheel drive  |             | Hydrostatic 4 wheel drive  |                | Hydrostatic 4 wheel drive           |                 |
| Transmission                | Automotive control         |             | Automotive control         |                | Automotive control                  |                 |
| Differential                | Limited slip on both axles |             | Limited slip on both axles |                | Limited slip on both axles          |                 |
| Final drive                 | 6 tons axles               |             | 6 tons axles (Heavy Duty)  |                | 8 tons planetary axles (Heavy Duty) |                 |
| Pulling force               | 12.600 N                   |             | 14.300 N                   |                | 23.000 N                            |                 |
| Driving hydraulics          | 84 l/min (350 bar)         |             | 84 l/min (350 bar)         |                | 95 l/min (350 bar)                  |                 |
| Working hydraulics          | 45 l/min (170 bar)         |             | 45 l/min (170 bar)         |                | 45 l/min (170 bar)                  |                 |
| Parking brake               | Drum brakes                |             | Drum brakes                |                | Drum brakes                         |                 |

## STANDARD MACHINE FEATURES

|   | G2200 | G2200 X-TRA | G2200 HD | G2200 HD X-TRA | G2200 HD+ | G2200 HD+ X-TRA |
|---|-------|-------------|----------|----------------|-----------|-----------------|
| Double acting valve at the front (mechanical)                             | Std   | Std         | Std      | Std            | Std       | Std             |
| Floating position on lifting cylinder(s)                                  | Std   | Std         | Std      | Std            | Std       | Std             |
| ROPS / FOPS safetyroof incl. safety doors left and right                  | Std   | Std         | Std      | Std            | Std       | Std             |
| Hydraulic servicebrake on 4 wheels  | Std   | Std         | Std      | Std            | Std       | Std             |
| Luxury air suspended seat with safety belt, armrest and extended backrest | Std   | Std         | Std      | Std            | Std       | Std             |
| Main switch   | Std   | Std         | Std      | Std            | Std       | Std             |
| Towing hook   | Std   | Std         | Std      | Std            | Std       | Std             |
| 1 Counterweight integrated into the bumper                                | Std   | Std         | Std      | Std            | Std       | Std             |
| Working light (halogen) at the front                                      | Std   | Std         | Std      | Std            | Std       | Std             |
| Cyclone filter  | Std   | Std         | Std      | Std            | Std       | Std             |
| Oil cooler  | Std   | Std         | Std      | Std            | Std       | Std             |

<sup>1</sup> Measured with earthbucket

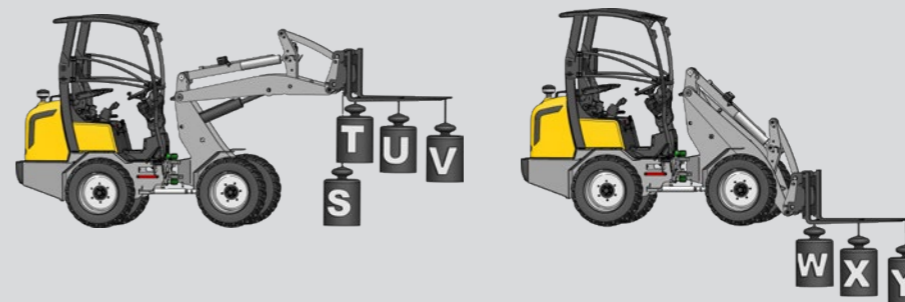
<sup>2</sup> Measured with hinge point in straight position on standard tyres

<sup>3</sup> Measured on standard tyres with safety roof

With the arrival of the G2200 models, TOBROCO-GIANT is introducing six new articulated loaders from 2.2 ton. The compact wheel loaders are equipped with a Stage V, engine without DOC and DPF system. This means that these models are developed in such a way that they do not have to regenerate. For activities such as loading and unloading, the articulated loaders are available with standard front frame or with X-TRA frame for heavy work within construction and earthmoving.

## TIPPING LOADS

|   | G2200    | G2200 X-TRA | G2200 HD | G2200 HD X-TRA | G2200 HD+ | G2200 HD+ X-TRA |
|---|----------|-------------|----------|----------------|-----------|-----------------|
| S | 1.450 kg | 2.054 kg    | 1.450 kg | 2.054 kg       | 1.450 kg  | 2.054 kg        |
| T | 1.250 kg | 1.580 kg    | 1.250 kg | 1.580 kg       | 1.250 kg  | 1.580 kg        |
| U | 950 kg   | 1.140 kg    | 950 kg   | 1.140 kg       | 950 kg    | 1.140 kg        |
| V | 745 kg   | 850 kg      | 745 kg   | 850 kg         | 745 kg    | 850 kg          |
| W | 2.000 kg | 2.675 kg    | 2.000 kg | 2.675 kg       | 2.000 kg  | 2.675 kg        |
| X | 1.270 kg | 1.590 kg    | 1.270 kg | 1.590 kg       | 1.270 kg  | 1.590 kg        |
| Y | 1.000 kg | 1.120 kg    | 1.000 kg | 1.120 kg       | 1.000 kg  | 1.120 kg        |



## WIDE SELECTION OF G2200 MODELS.

Depending on customer wishes and activities, it is possible to choose between three different models. Besides the standard G2200, a G2200 HD and G2200 HD+ can be chosen. These three models are also available as X-TRA version with a higher tipping load. The models with a standard frame can reach a height of over 2.8 meters and have a tipping load of 1,400 kg. The X-TRA models ensure an increased tipping load of 2.054 kg and lifting height of 2.45 meters.

## MEASUREMENTS

|                                      | Unit    | G2200 | G2200 X-TRA | G2200 HD | G2200 HD X-TRA | G2200 HD+ | G2200 HD+ X-TRA |
|--------------------------------------|---------|-------|-------------|----------|----------------|-----------|-----------------|
| A Wheelbase                          | mm      | 1.515 | 1.580       | 1.515    | 1.580          | 1.515     | 1.580           |
| B Total length                       | mm      | 2.975 | 3.054       | 2.975    | 3.054          | 2.975     | 3.054           |
| C Length with bucket                 | mm      | 3.690 | 3.830       | 3.690    | 3.830          | 3.690     | 3.830           |
| D Length 3 point hitch               | mm      | 622   | 622         | 622      | 622            | 622       | 622             |
| E 3 Point hitch in lowest position   | mm      | 134   | 134         | 134      | 134            | 134       | 134             |
| F 3 Point hitch in highest position  | mm      | 797   | 797         | 797      | 797            | 797       | 797             |
| G Seat height                        | mm      | 1.256 | 1.256       | 1.256    | 1.256          | 1.256     | 1.256           |
| H Max. height with safety roof       | mm      | 2.300 | 2.300       | 2.300    | 2.300          | 2.300     | 2.300           |
| I Max. height with cabin             | mm      | 2.284 | 2.284       | 2.284    | 2.284          | 2.284     | 2.284           |
| J Height front frame                 | mm      | 1.480 | 1.250       | 1.480    | 1.250          | 1.480     | 1.250           |
| K Max. dumping height                | mm      | 1.988 | 1.680       | 1.988    | 1.680          | 1.988     | 1.680           |
| L Lifting height                     | mm      | 2.825 | 2.450       | 2.825    | 2.450          | 2.825     | 2.450           |
| M Height with bucket                 | mm      | 3.392 | 3.040       | 3.392    | 3.040          | 3.392     | 3.040           |
| N Rollback angle on the ground       | degrees | 43    | 41          | 43       | 41             | 43        | 41              |
| O Rollback angle at max. lift height | degrees | 53    | 46          | 53       | 46             | 53        | 46              |
| P Max. angle for bucket emptying     | degrees | 47    | 37          | 47       | 37             | 47        | 37              |
| Q Drive-up angle                     | degrees | 29    | 29          | 29       | 29             | 29        | 29              |
| R Outer size of tires                | ø mm    | 760   | 760         | 760      | 760            | 760       | 760             |
| 1D Width on standard tyres           | mm      | 1.080 | 1.080       | 1.080    | 1.080          | 1.080     | 1.080           |
| 1A Turning radius with bucket        | mm      | 2.599 | 2.650       | 2.599    | 2.650          | 2.599     | 2.650           |
| 1B Turning radius on outer edge      | mm      | 2.292 | 2.342       | 2.292    | 2.342          | 2.292     | 2.342           |
| 1C Inner turning radius              | mm      | 1.179 | 1.230       | 1.179    | 1.230          | 1.179     | 1.230           |



# ONE MACHINE FOR EVERY JOB!



INFRASTRUCTURE



AGRICULTURAL



CONSTRUCTION & DEMOLITION



EQUINE INDUSTRY



FORESTRY



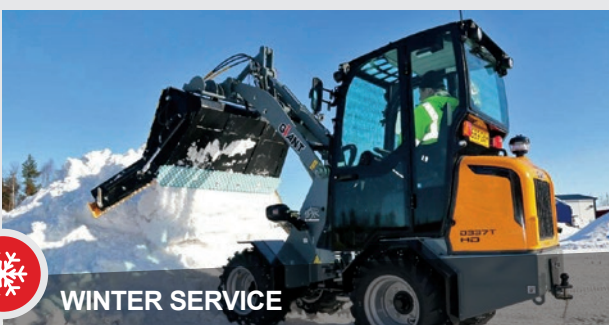
GOVERNMENT & MUNICIPALITIES



MATERIAL HANDLING



NURSERIES



WINTER SERVICE



LANDSCAPING & GROUND CARE



**GIANT**  
BY TOBROCO

